

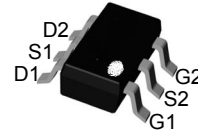
### Features

- **N-Channel**  
20V/5A,  
 $R_{DS(ON)} = 40m\Omega(TYP.) @ V_{GS} = 4.5V$   
 $R_{DS(ON)} = 50m\Omega(TYP.) @ V_{GS} = 2.5V$   
 $R_{DS(ON)} = 80m\Omega(TYP.) @ V_{GS} = 1.8V$
- **P-Channel**  
-20V/-3.3A,  
 $R_{DS(ON)} = 65m\Omega(TYP.) @ V_{GS} = -4.5V$   
 $R_{DS(ON)} = 90m\Omega(TYP.) @ V_{GS} = -2.5V$   
 $R_{DS(ON)} = 130m\Omega(TYP.) @ V_{GS} = -1.8V$
- 100% UIS +  $R_g$  Tested
- Reliable and Rugged
- Lead Free and Green Devices Available (RoHS Compliant)

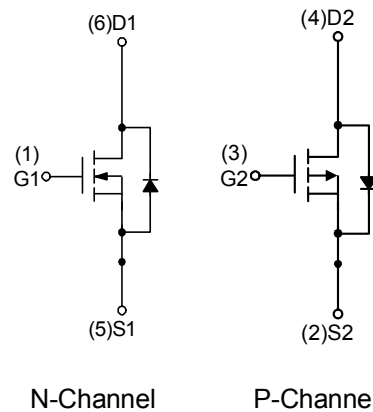
### Applications

- Power Management in Notebook Computer, Portable Equipment and Battery Powered Systems.
- Load Switch

### Pin Description



Top View of SOT-23-6



### Absolute Maximum Ratings ( $T_A = 25^\circ C$ unless otherwise noted)

Symbol	Parameter	N Channel	P Channel	Unit	
<b>Common Ratings</b>					
$V_{DSS}$	Drain-Source Voltage	20	-20	V	
$V_{GSS}$	Gate-Source Voltage	$\pm 12$	$\pm 12$	V	
$I_D$	Continuous Drain Current	$T_A = 25^\circ C$	5	-3.3	A
		$T_A = 70^\circ C$	4	-2.6	
$I_{DM}$	Pulsed Drain Current	$V_{GS} = 10V$	20	-13	
$I_S$	Diode Continuous Forward Current	1			
$T_J$	Maximum Junction Temperature	150		$^\circ C$	
$T_{STG}$	Storage Temperature Range	-55 to 150			
$P_D$	Maximum Power Dissipation	$T_A = 25^\circ C$	1.4	W	
		$T_A = 70^\circ C$	0.9		
$R_{\theta JA}^*$	Thermal Resistance-Junction to Ambient	$t \leq 10s$	90	$^\circ C/W$	
		Steady State	125		

**N Channel Electrical Characteristics** ( $T_A = 25^\circ\text{C}$  unless otherwise noted)

Symbol	Parameter	Test Conditions	N Channel			Unit	
			Min.	Typ.	Max.		
<b>Static Characteristics</b>							
$BV_{DSS}$	Drain-Source Breakdown Voltage	$V_{GS}=0V, I_{DS}=250\mu A$	20	-	-	V	
$I_{DSS}$	Zero Gate Voltage Drain Current	$V_{DS}=16V, V_{GS}=0V$	-	-	1	$\mu A$	
		$T_J=85^\circ C$	-	-	30		
$V_{GS(th)}$	Gate Threshold Voltage	$V_{DS}=V_{GS}, I_{DS}=250\mu A$	0.5	0.7	1	V	
$I_{GSS}$	Gate Leakage Current	$V_{GS}=\pm 12V, V_{DS}=0V$	-	-	$\pm 100$	nA	
$R_{DS(ON)}^a$	Drain-Source On-State Resistance	$V_{GS}=4.5V, I_{DS}=5A$	-	40	58	m $\Omega$	
		$V_{GS}=2.5V, I_{DS}=4A$	-	50	74		
		$V_{GS}=1.8V, I_{DS}=1A$	-	80	95		
<b>Diode Characteristics</b>							
$V_{SD}^a$	Diode Forward Voltage	$I_{SD}=1A, V_{GS}=0V$	-	0.75	1.1	V	
$t_{rr}$	Reverse Recovery Time	$I_{SD}=5A, dI_{SD}/dt=100A/\mu s$	-	10.5	-	ns	
$Q_{rr}$	Reverse Recovery Charge		-	3.2	-	nC	
<b>Dynamic Characteristics<sup>b</sup></b>							
$R_g$	Gate Resistance	$V_{GS}=0V, V_{DS}=0V, F=1MHz$	-	2.2	-	$\Omega$	
$C_{iss}$	Input Capacitance	$V_{GS}=0V, V_{DS}=10V, \text{Frequency}=1.0MHz$	-	275	-	pF	
$C_{oss}$	Output Capacitance		-	70	-		
$C_{riss}$	Reverse Transfer Capacitance		-	60	-		
$t_{d(ON)}$	Turn-on Delay Time	$V_{DD}=10V, R_L=10\Omega, I_{DS}=1A, V_{GEN}=10V, R_G=6\Omega$	-	2.4	-	ns	
$T_r$	Turn-on Rise Time		-	13	-		
$t_{d(OFF)}$	Turn-off Delay Time		-	15.5	-		
$T_f$	Turn-off Fall Time		-	3	-		
<b>Gate Charge Characteristics<sup>b</sup></b>							
$Q_g$	Total Gate Charge	$V_{DS}=10V, I_{DS}=5A$	$V_{GS}=4.5V,$	-	4.5	-	nC
			$V_{GS}=10V$	-	9	-	
$Q_{gs}$	Gate-Source Charge	$V_{DS}=10V, V_{GS}=10V, I_{DS}=5A$	-	0.3	-		
$Q_{gd}$	Gate-Drain Charge		-	2	-		
$Q_{gth}$	Threshold Gate Charge		-	0.1	-		

 Note a : Pulse test; pulse width $\leq 300\mu s$ , duty cycle $\leq 2\%$ .

Note b : Guaranteed by design, not subject to production testing.

**P Channel Electrical Characteristics** ( $T_A = 25^\circ\text{C}$  unless otherwise noted)

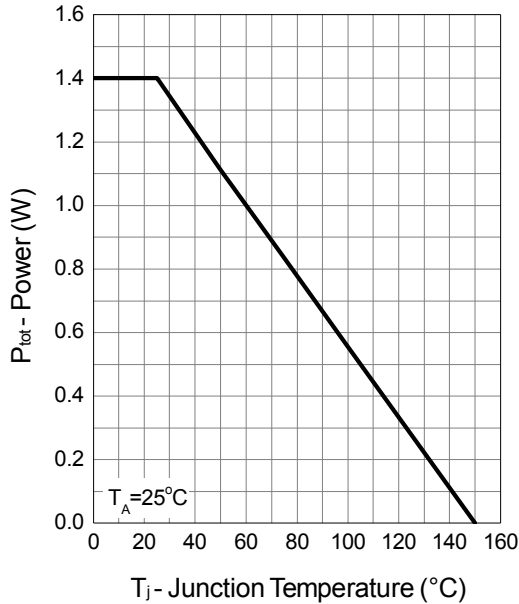
Symbol	Parameter	Test Conditions	P Channel			Unit	
			Min.	Typ.	Max.		
<b>Static Characteristics</b>							
$BV_{DSS}$	Drain-Source Breakdown Voltage	$V_{GS}=0V, I_{DS}=-250\mu A$	-20	-	-	V	
$I_{DSS}$	Zero Gate Voltage Drain Current	$V_{DS}=-16V, V_{GS}=0V$	-	-	-1	$\mu A$	
		$T_J=85^\circ C$	-	-	-30		
$V_{GS(th)}$	Gate Threshold Voltage	$V_{DS}=V_{GS}, I_{DS}=-250\mu A$	-0.5	-0.7	-1	V	
$I_{GSS}$	Gate Leakage Current	$V_{GS}=\pm 12V, V_{DS}=0V$	-	-	$\pm 100$	nA	
$R_{DS(ON)}^a$	Drain-Source On-State Resistance	$V_{GS}=-4.5V, I_{DS}=-3.3A$	-	65	85	m $\Omega$	
		$V_{GS}=-2.5V, I_{DS}=-2.1A$	-	90	120		
		$V_{GS}=-1.8V, I_{DS}=-1A$	-	130	210		
<b>Diode Characteristics</b>							
$V_{SD}^a$	Diode Forward Voltage	$I_{SD}=-1A, V_{GS}=0V$	-	-0.75	-1.1	V	
$t_{rr}$	Reverse Recovery Time	$I_{SD}=-3.3A, di_{SD}/dt=100A/\mu s$	-	16	-	ns	
$Q_{rr}$	Reverse Recovery Charge		-	6	-	nC	
<b>Dynamic Characteristics<sup>b</sup></b>							
$R_g$	Gate Resistance	$V_{GS}=0V, V_{DS}=0V, F=1MHz$	-	10	-	$\Omega$	
$C_{iss}$	Input Capacitance	$V_{GS}=0V, V_{DS}=-10V, \text{Frequency}=1.0MHz$	-	365	-	pF	
$C_{oss}$	Output Capacitance		-	75	-		
$C_{riss}$	Reverse Transfer Capacitance		-	60	-		
$t_{d(ON)}$	Turn-on Delay Time	$V_{DD}=-10V, R_L=10\Omega, I_{DS}=-1A, V_{GEN}=-10V, R_G=6\Omega$	-	5.3	-	ns	
$T_r$	Turn-on Rise Time		-	14.2	-		
$t_{d(OFF)}$	Turn-off Delay Time		-	30	-		
$T_f$	Turn-off Fall Time		-	23	-		
<b>Gate Charge Characteristics<sup>b</sup></b>							
$Q_g$	Total Gate Charge	$V_{DS}=-10V, I_{DS}=-3.3A$	$V_{GS}=-4.5V,$	-	4.5	-	nC
			$V_{GS}=-10V$	-	9.2	-	
$Q_{gs}$	Gate-Source Charge	$V_{DS}=-10V, V_{GS}=-10V, I_{DS}=-3.3A$	-	0.7	-		
$Q_{gd}$	Gate-Drain Charge		-	1.8	-		
$Q_{gth}$	Threshold Gate Charge		-	0.3	-		

 Note a : Pulse test; pulse width $\leq 300\mu s$ , duty cycle $\leq 2\%$ .

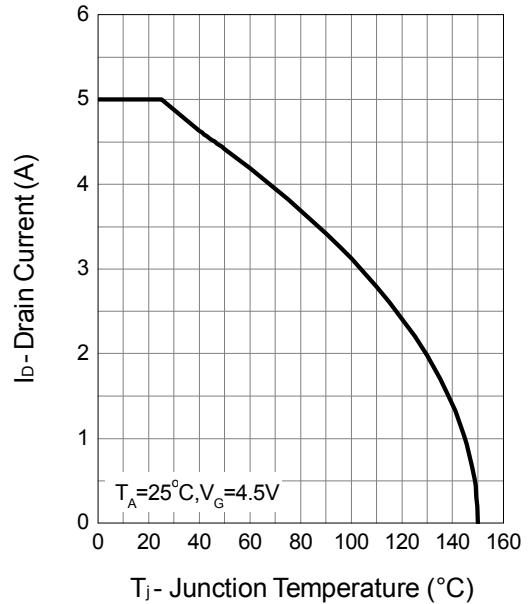
Note b : Guaranteed by design, not subject to production testing.

## N Channel Typical Operating Characteristics

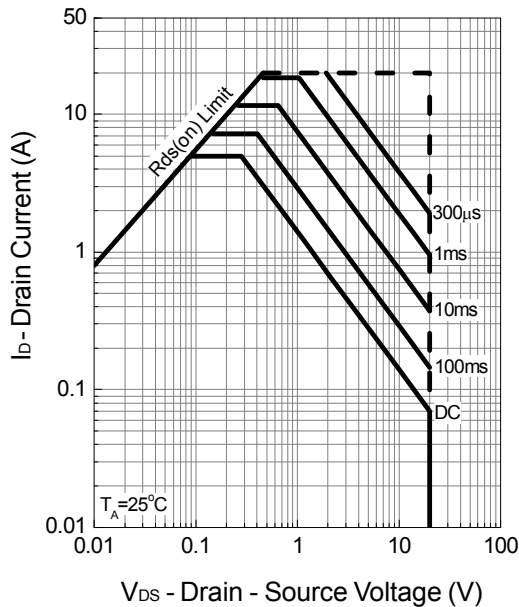
**Power Dissipation**



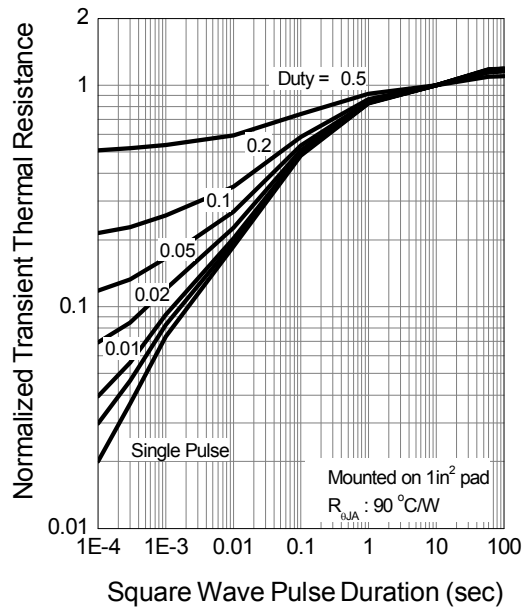
**Drain Current**



**Safe Operation Area**

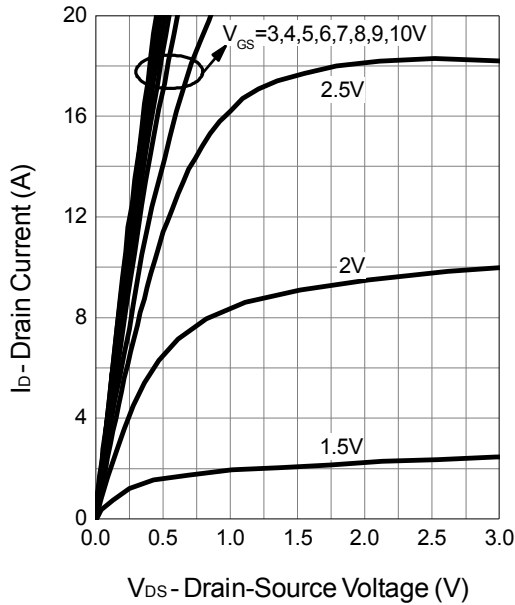


**Thermal Transient Impedance**

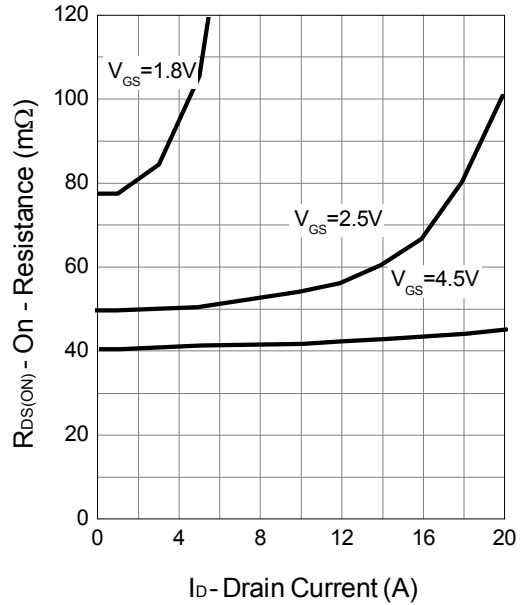


## N Channel Typical Operating Characteristics (Cont.)

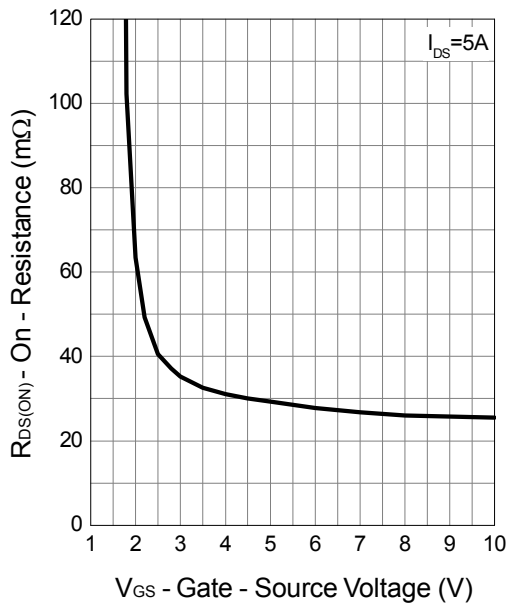
**Output Characteristics**



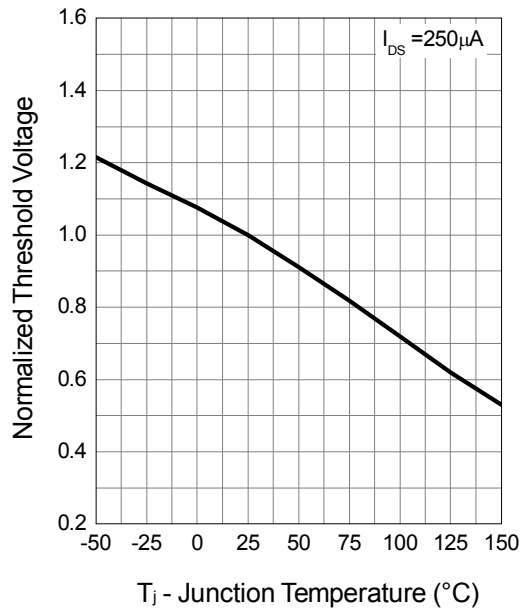
**Drain-Source On Resistance**



**Gate-Source On Resistance**

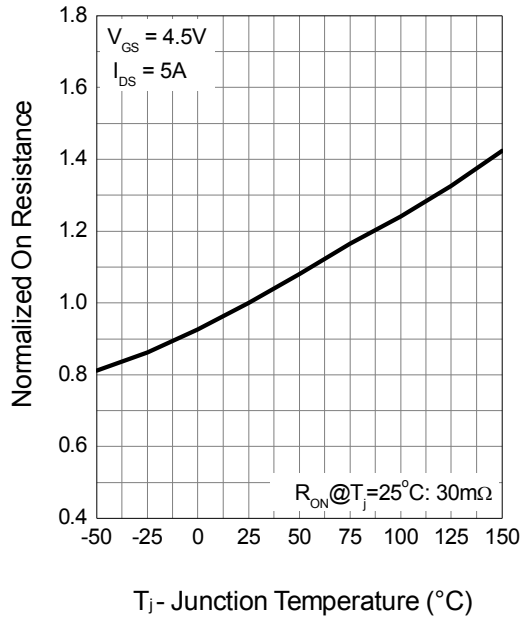


**Gate Threshold Voltage**

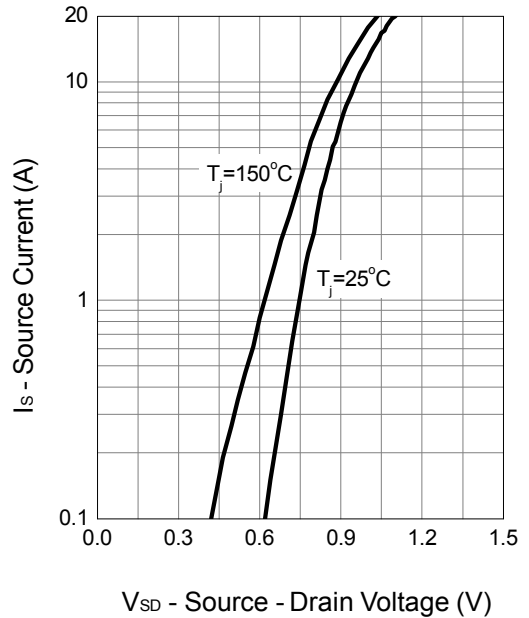


**N Channel Typical Operating Characteristics (Cont.)**

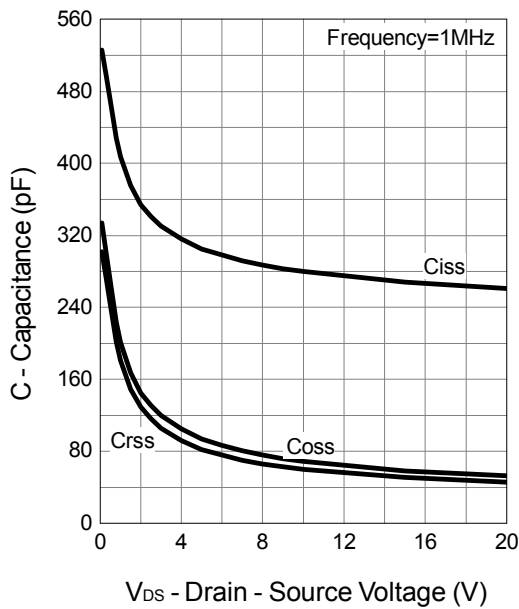
**Drain-Source On Resistance**



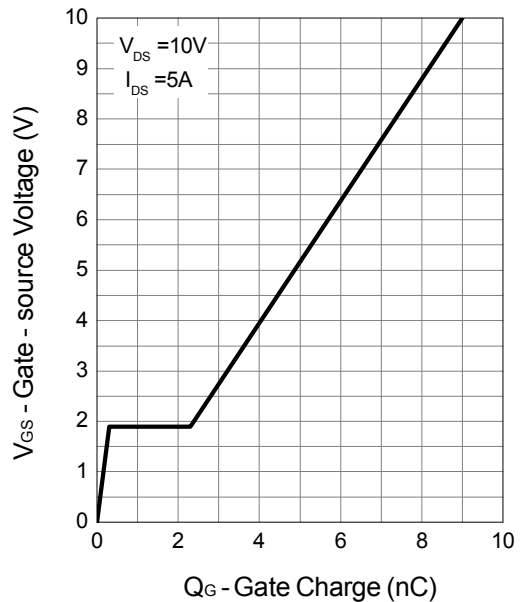
**Source-Drain Diode Forward**



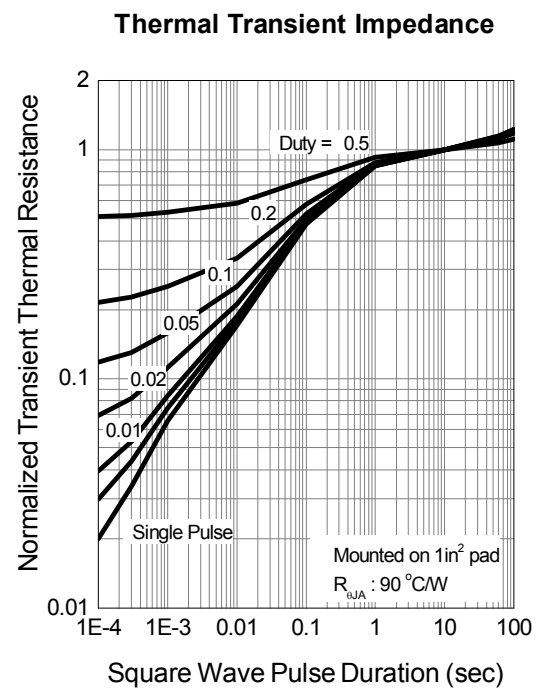
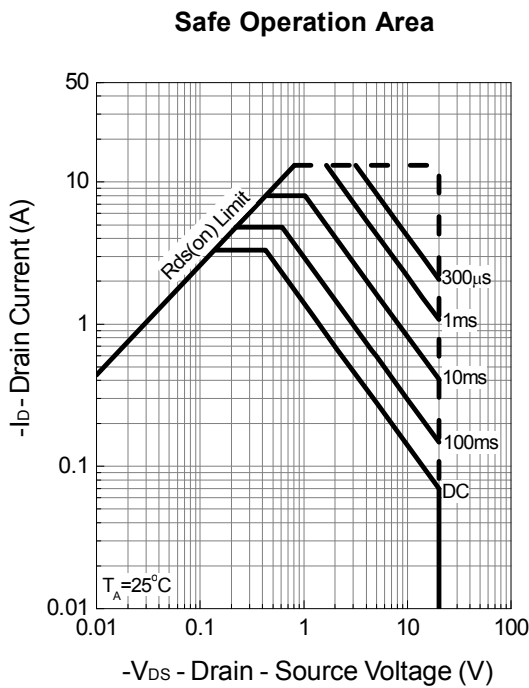
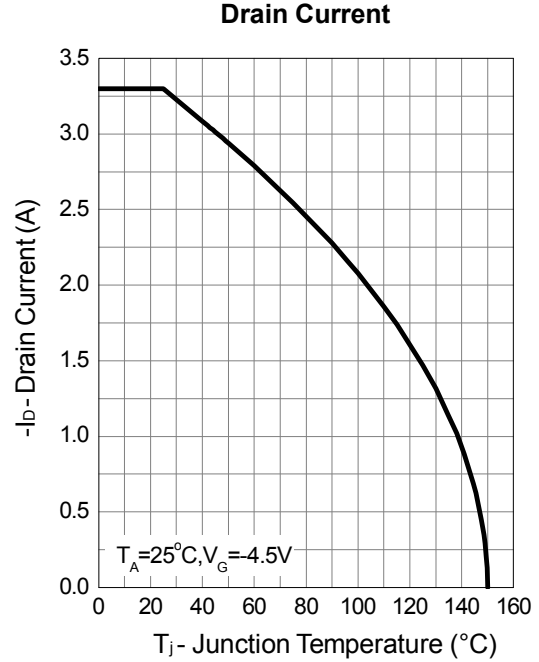
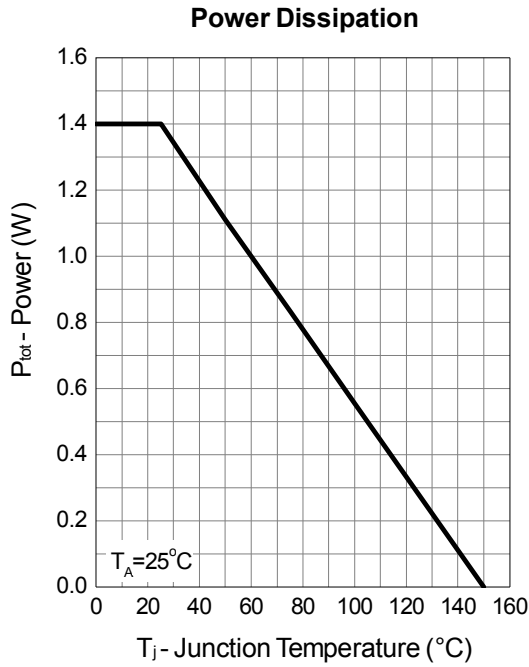
**Capacitance**



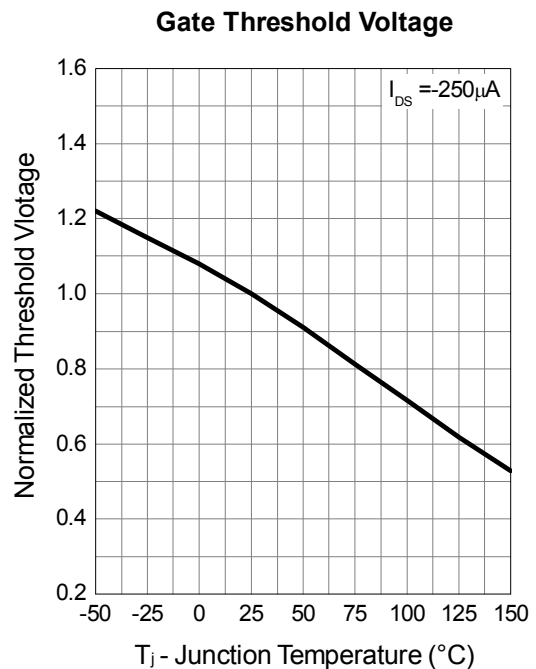
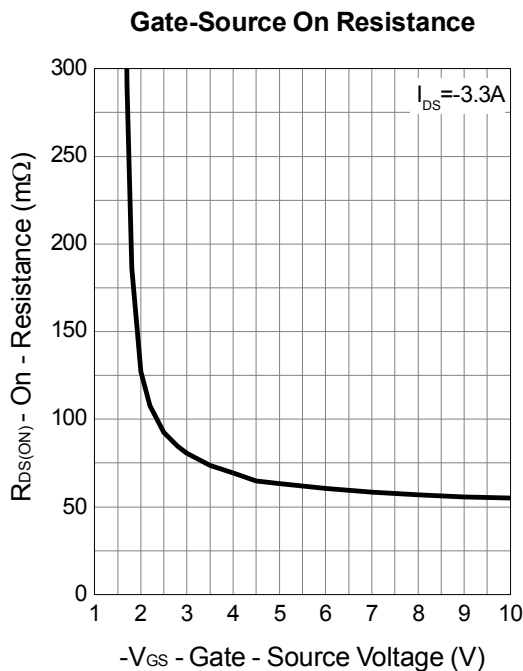
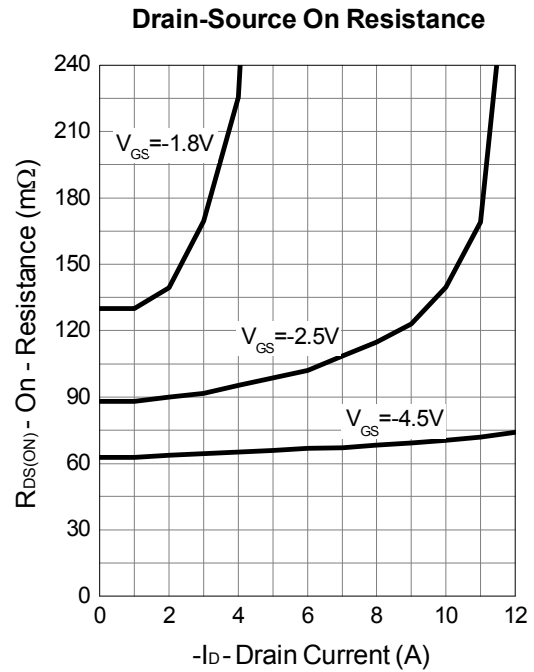
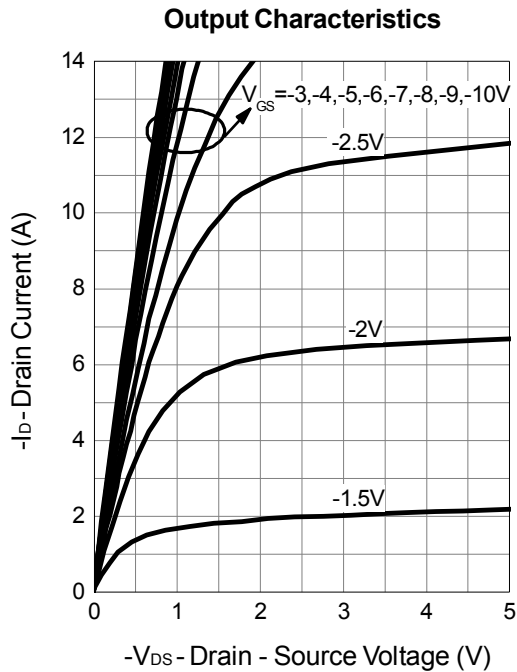
**Gate Charge**



## P Channel Typical Operating Characteristics



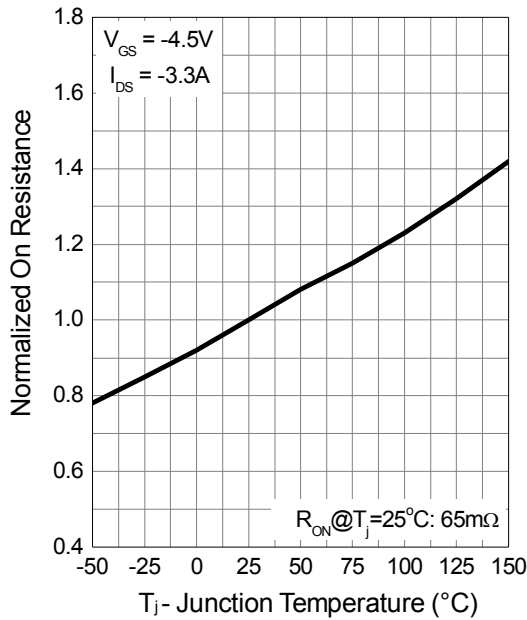
## P Channel Typical Operating Characteristics (Cont.)



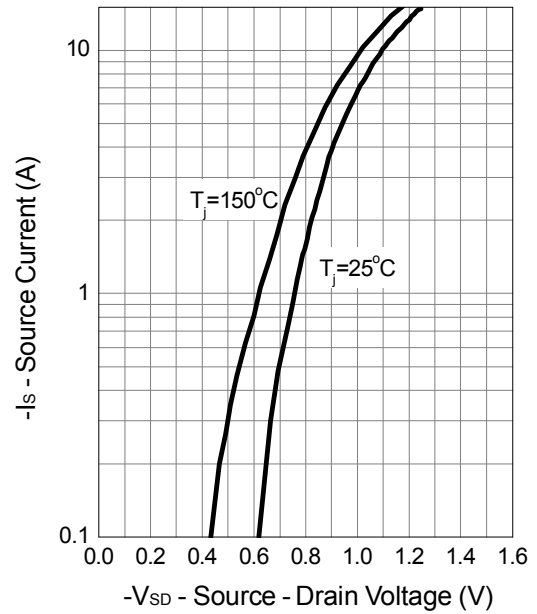


## P Channel Typical Operating Characteristics (Cont.)

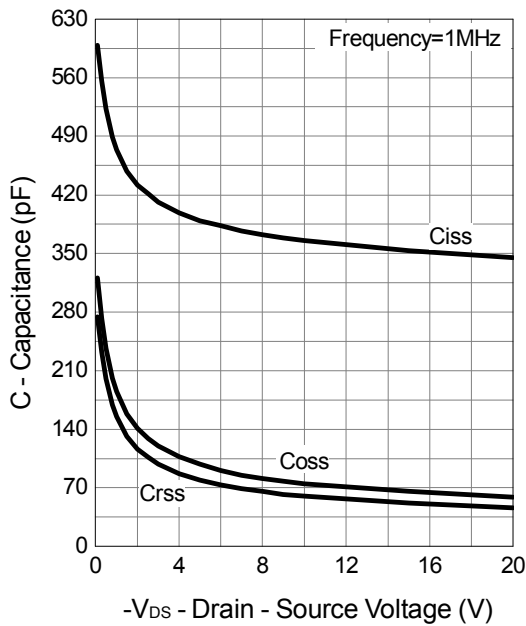
**Drain-Source On Resistance**



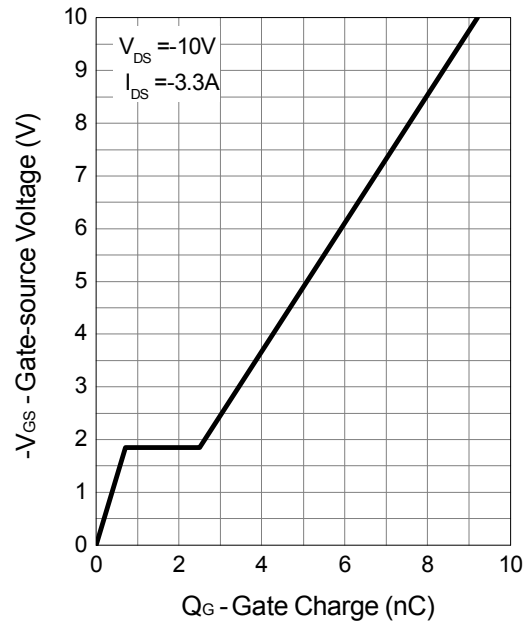
**Source-Drain Diode Forward**



**Capacitance**

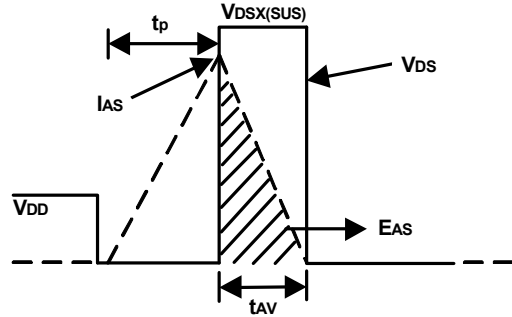
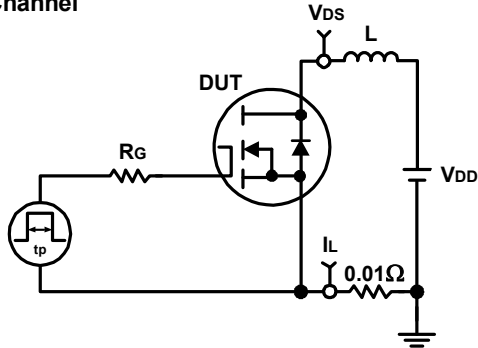


**Gate Charge**

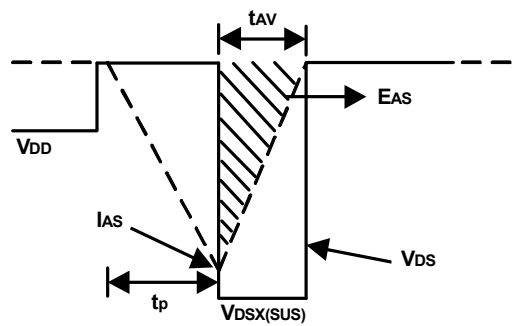
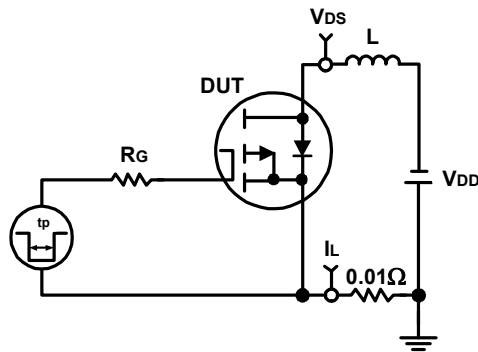


## Avalanche Test Circuit and Waveforms

N Channel

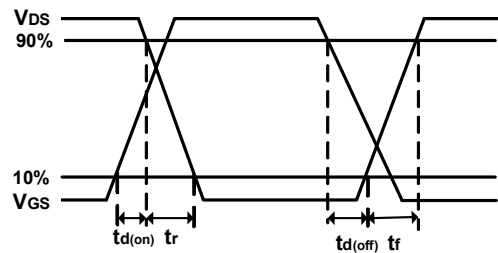
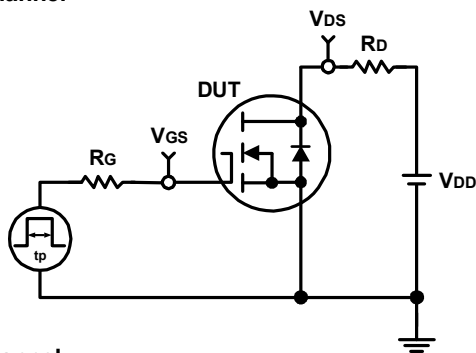


P Channel

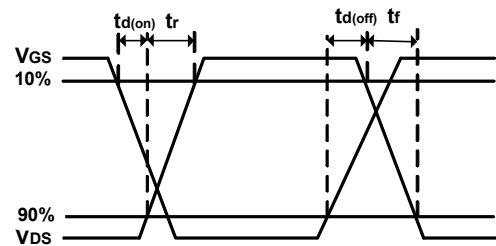
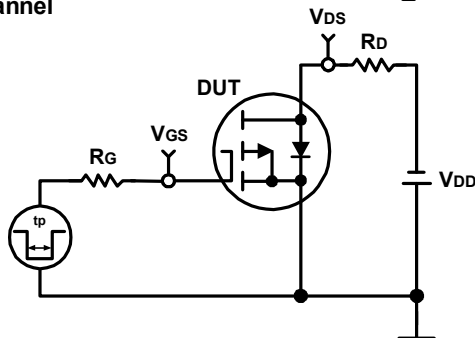


## Switching Time Test Circuit and Waveforms

N Channel



P Channel



## Dual Enhancement Mode MOSFET (N- and P-Channel)

Flow (wave) soldering (solder dipping)

Product	Peak Temperature	Dipping Time
Pb device	245°C ±5°C	5sec±1 sec
Pb-Free device	260°C +0/-5°C	5sec±1 sec



This integrated circuit can be damaged by ESD. UniverChip Corporation recommends that all integrated circuits be handled with appropriate precautions. Failure to observe proper handling and installation procedure can cause damage. ESD damage can range from subtle performance degradation to complete device failure. Precision integrated circuits may be more susceptible to damage because very small parametric changes could cause the device not to meet its published specifications.

### Attention:

- Any and all XPX power products described or contained herein do not have specifications that can handle applications that require extremely high levels of reliability, such as life-support systems, aircraft's control systems, or other applications whose failure can be reasonably expected to result in serious physical and/or material damage. Consult with your XPX power representative nearest you before using any XPX power products described or contained herein in such applications.
- XPX power assumes no responsibility for equipment failures that result from using products at values that exceed, even momentarily, rated values (such as maximum ratings, operating condition ranges, or other parameters) listed in products specifications of any and all XPX power products described or contained herein.
- Specifications of any and all XPX power products described or contained herein stipulate the performance, characteristics, and functions of the described products in the independent state, and are not guarantees of the performance, characteristics, and functions of the described products as mounted in the customer's products or equipment. To verify symptoms and states that cannot be evaluated in an independent device, the customer should always evaluate and test devices mounted in the customer's products or equipment.
- XPX power Semiconductor CO.,LTD. strives to supply high-quality high-reliability products. However, any and all semiconductor products fail with some probability. It is possible that these probabilistic failures could give rise to accidents or events that could endanger human lives, that could give rise to smoke or fire, or that could cause damage to other property. When designing equipment, adopt safety measures so that these kinds of accidents or events cannot occur. Such measures include but are not limited to protective circuits and error prevention circuits for safe design, redundant design, and structural design.
- In the event that any or all XPX power products(including technical data, services) described or contained herein are controlled under any of applicable local export control laws and regulations, such products must not be exported without obtaining the export license from the authorities concerned in accordance with the above law.
- No part of this publication may be reproduced or transmitted in any form or by any means, electronic or mechanical, including photocopying and recording, or any information storage or retrieval system, or otherwise, without the prior written permission of XPX power Semiconductor CO.,LTD.
- Information (including circuit diagrams and circuit parameters) herein is for example only ; it is not guaranteed for volume production. XPX power believes information herein is accurate and reliable, but no guarantees are made or implied regarding its use or any infringements of intellectual property rights or other rights of third parties.
- Any and all information described or contained herein are subject to change without notice due to product/ technology improvement, etc. When designing equipment, refer to the "Delivery Specification" for the XPX power product that you intend to use.
- This catalog provides information as of Sep.2019. Specifications and information herein are subject to change without notice.